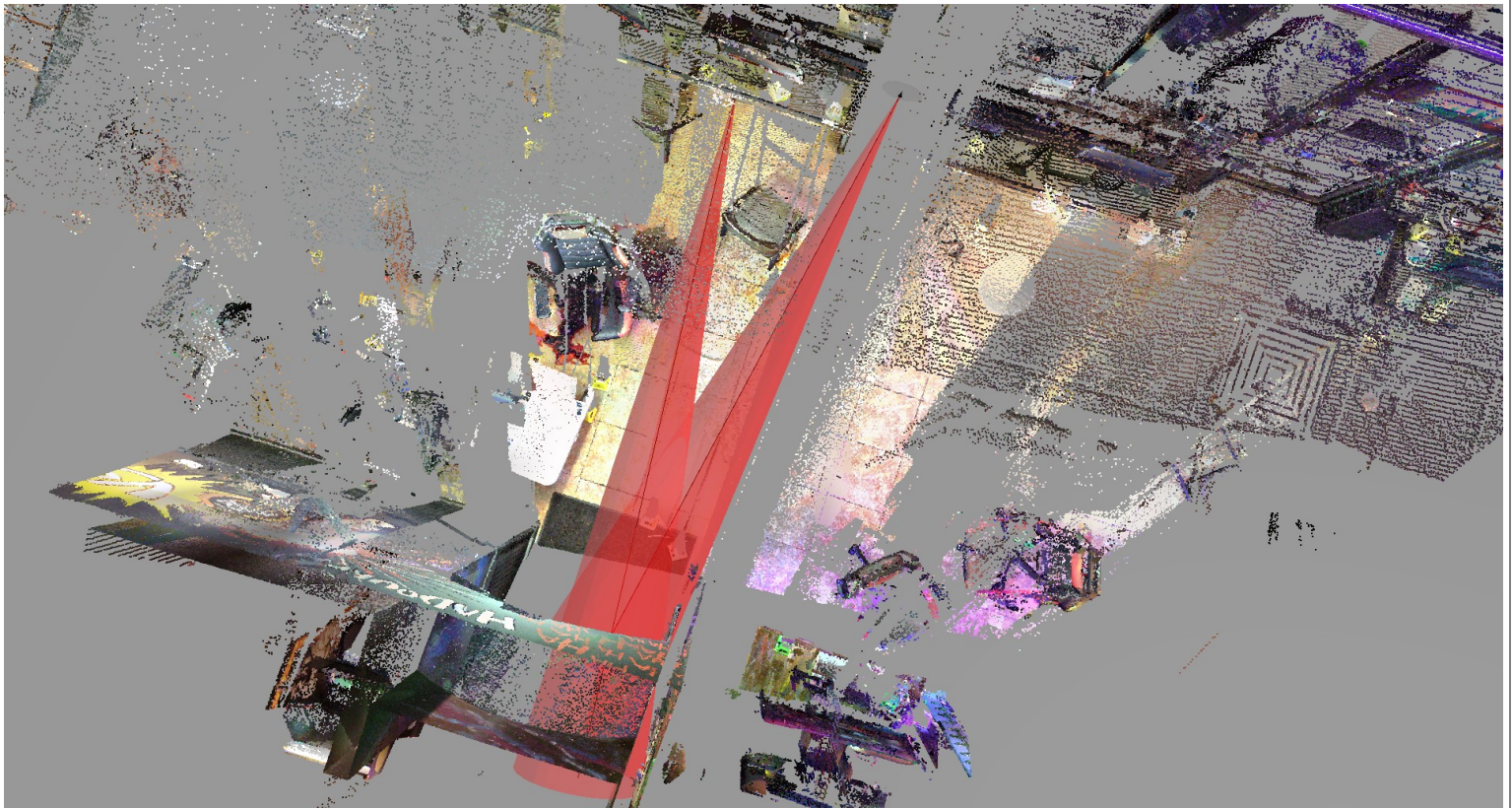




# Trajectory Report

|               |   |
|---------------|---|
| Case Name     | GLHF Game Bar at the Landing                        |
| Case Number   |   |
| Incident Date | August 26, 2018                                     |
| Location      | 2 Independent Drive.<br>Jacksonville, Florida 32202 |

|              |                    |
|--------------|--------------------|
| Drawn By     | P. Watson          |
| Drawn Date   | September 19, 2018 |
| Report Count | 2                  |





# Trajectory Report

|               |   |
|---------------|---|
| Case Name     | GLHF Game Bar at the Landing                        |
| Case Number   |   |
| Incident Date | August 26, 2018                                     |
| Location      | 2 Independent Drive.<br>Jacksonville, Florida 32202 |

|            |                    |
|------------|--------------------|
| Drawn By   | P. Watson          |
| Drawn Date | September 19, 2018 |



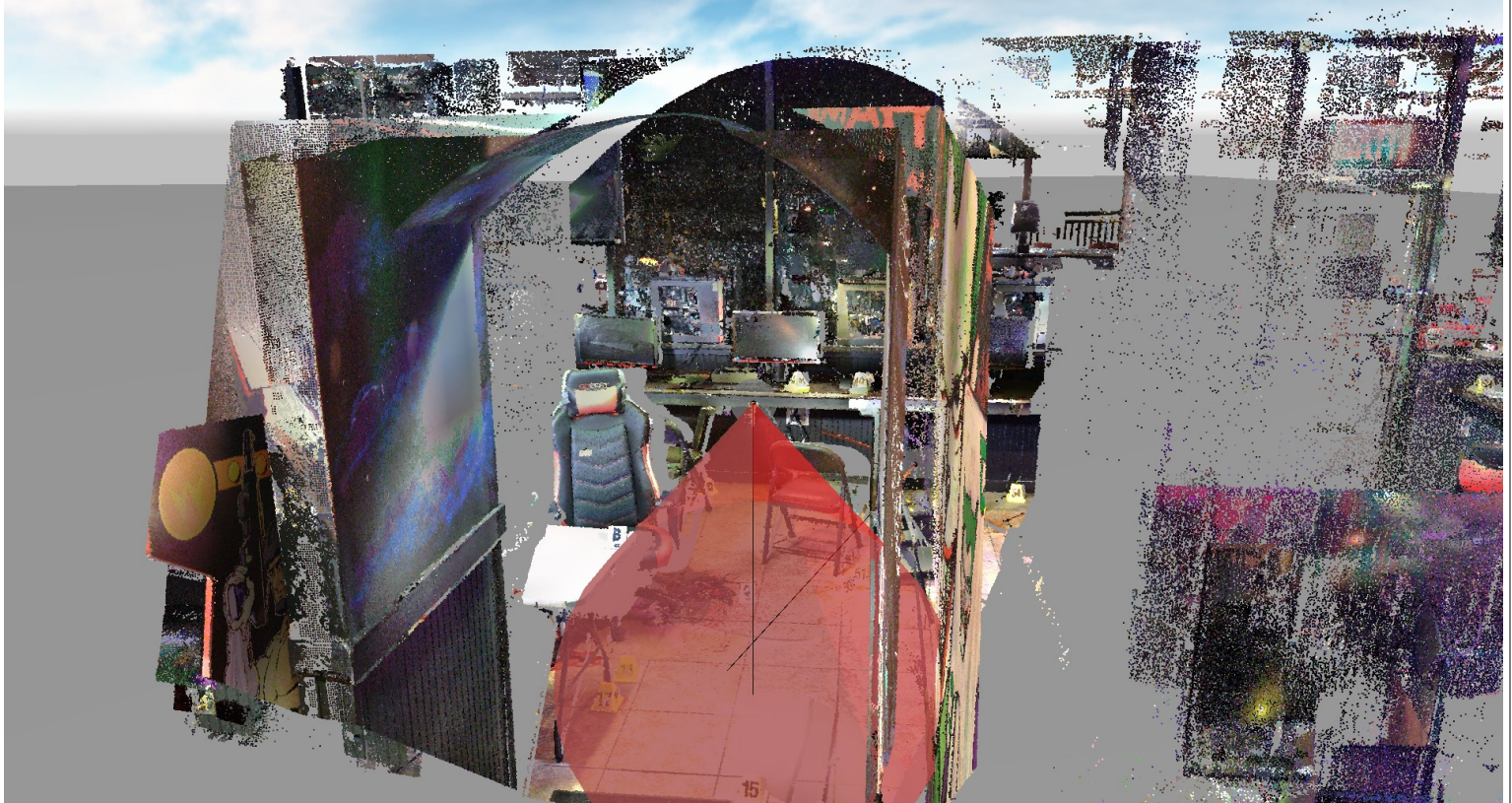
| Trajectory Report   |            |         |   |       |  |      |
|---------------------|------------|---------|---|-------|--|------|
| Point of Impact     | X          | -28.70' | Y   | 23.82 | Z  | 0.60 |
| Point of Origin     | X          | -15.65' | Y   | 16.95 | Z  | 3.34 |
| Angle Convention    | 0° to 180° |         | NATO minus90 to 90 or 0 to 180                                |       |  |      |
| Inclination angle   | 82.7°      |         | Vertical angle relative to the impact plane                   |       |  |      |
| Azimuth angle       | 80.9°      |         | Horizontal angle relative to the impact plane                 |       |  |      |
| Slope Length        | 15.00'     |         | Length of the trajectory from point of origin to impact plane |       |  |      |
| Horizontal Distance | 14.75'     |         | Horizontal distance from Origin to Impact                     |       |  |      |
| Error Cone          | H          | 5.0°    | V   | 5.0°  | degrees Horizontal and Vertical directions |      |



# Trajectory Report

|               |   |
|---------------|---|
| Case Name     | GLHF Game Bar at the Landing                        |
| Case Number   |   |
| Incident Date | August 26, 2018                                     |
| Location      | 2 Independent Drive.<br>Jacksonville, Florida 32202 |

|            |                    |
|------------|--------------------|
| Drawn By   | P. Watson          |
| Drawn Date | September 19, 2018 |



| Trajectory Report   |            |         |   |       |  |      |  |
|---------------------|------------|---------|---|-------|--|------|--|
| Point of Impact     | X          | -28.10' | Y   | 19.90 | Z  | 2.44 |  |
| Point of Origin     | X          | -13.56' | Y   | 16.73 | Z  | 4.33 |  |
| Angle Convention    | 0° to 180° |         | NATO minus90 to 90 or 0 to 180                                |       |  |      |  |
| Inclination angle   | 84.9°      |         | Vertical angle relative to the impact plane                   |       |  |      |  |
| Azimuth angle       | 95.7°      |         | Horizontal angle relative to the impact plane                 |       |  |      |  |
| Slope Length        | 15.00'     |         | Length of the trajectory from point of origin to impact plane |       |  |      |  |
| Horizontal Distance | 14.88'     |         | Horizontal distance from Origin to Impact                     |       |  |      |  |
| Error Cone          | H          | 5.0°    | V   | 5.0°  | degrees Horizontal and Vertical directions |      |  |